

# Tough TouchPLC™

# Tough on Heat, Humidity, Dust and Hosedown

Robust, NEMA 4X, IP66, Class I, Div II, Conformal Coated, Aluminum or Stainless Steel Panels

60°C  
95% Humidity  
4 yr Warranty

Hard surface Touchscreen with built-in **Anti-glare film (0.090" Thick)**

5 Display Sizes to Choose

Identical programming and features; you select the size and display most appropriate for the application, without concern for programming changes

**4" to 15" Display**



100K hrs

**Exclusive White LED Backlit**

**Displays with High-end brightness (500 Nits for TFT) and Wider viewing angle (60 deg)**

Trend Graph / Data Acquisition /

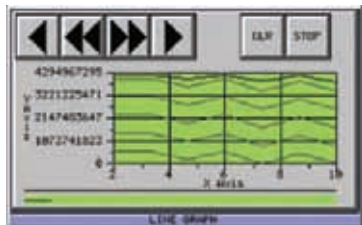
**Scripting**

Track up to 6 variables in one trend graph.

Acquire and store data.

Perform statistical

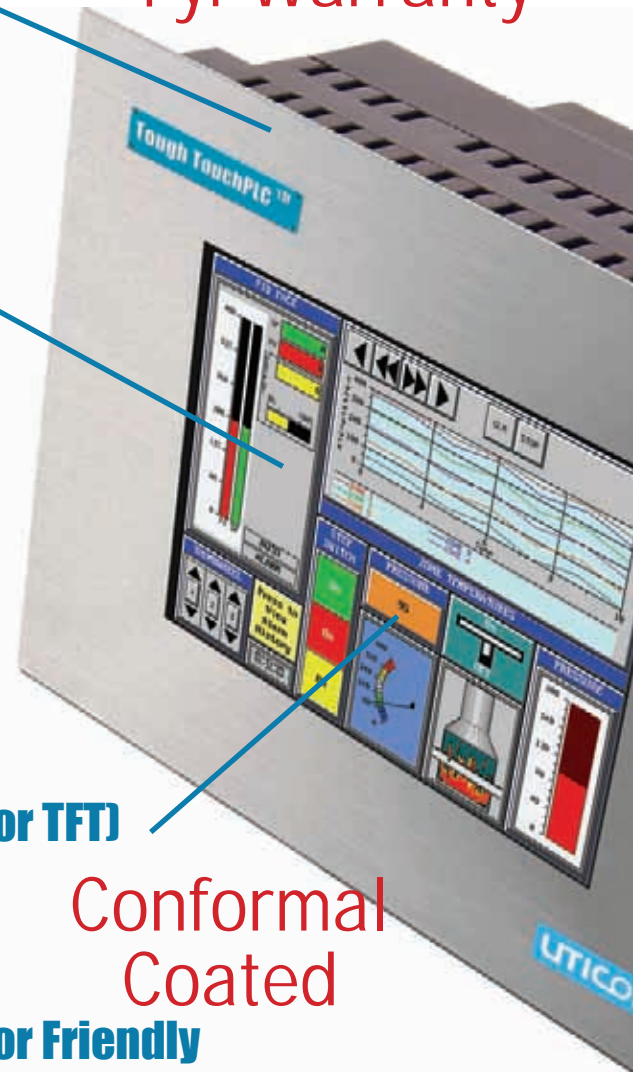
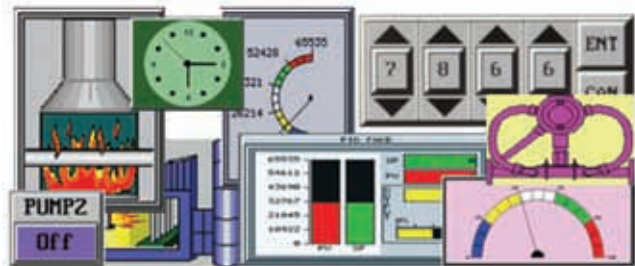
process control. Scripting allows Logical and Mathematical Operations on PLC data.



**Conformal Coated**

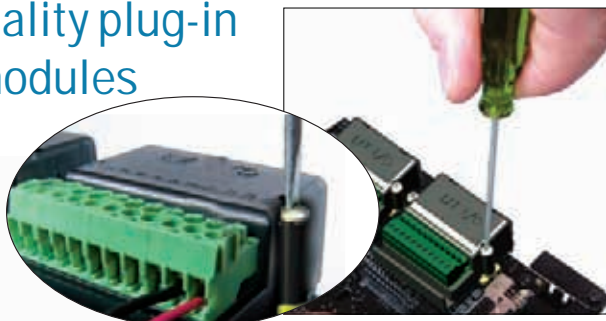
**Operator Friendly**

Toughpanels have the best looking pre-built as well as multi-state bitmap objects.



# First HMI with Modular PLC Built-In, Completely Flexible with 26 different I/O Modules

Wide Selection of Digital, Analog & Speciality plug-in I/O modules



32, 48, or 64 built-in I/O Expandable to 2048



4 Analog In, 4 Analog Out 12 bit resolution

**Profibus, DeviceNet, Modbus & Ethernet Connectivity**

One Programming Software, Single Port, Common Database

**32 bit Floating point Advanced Math with Log/Trig Functions**

8 Autotuned PID Loops

3 ms Scantime  
64KB Memory



100 KHz Counter Modules  
100 KHz PWM Modules

## Exclusive

### Net-View and Control

Tough TouchPLCs allow you to view and control the TouchPLCs anywhere in the world via the internet. Allows for immediate troubleshooting worldwide without leaving **the office**

