

UTDaq Data Acquisition Software

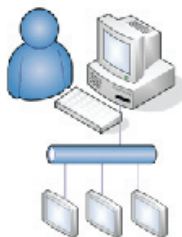
Log Data For Any PLC Tag

Available on RS232 Serial Port as well as Ethernet

It's as Simple as **1-2-3**
collect, save and store PLC tag data

What is UTDaq?

UTDaq is a data acquisition utility, designed to collect and save tag data from one or more (connected and running) Toughpanels.

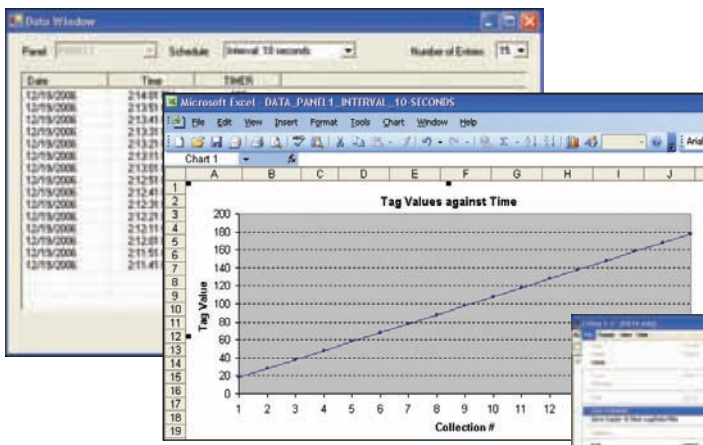


What kind of communication medium is required?

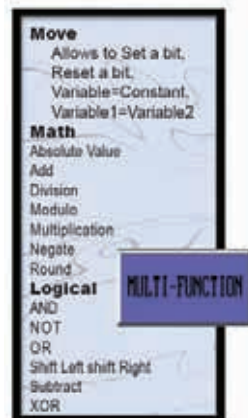
UTDaq works on both **Ethernet** as well as **Serial** communication medium.

How to view data?

Data files are organized in a convenient user selectable format (tab delimited or CSV) and can viewed in excel or any text editor.



Math-logic/Multi-function Buttons, Scripting

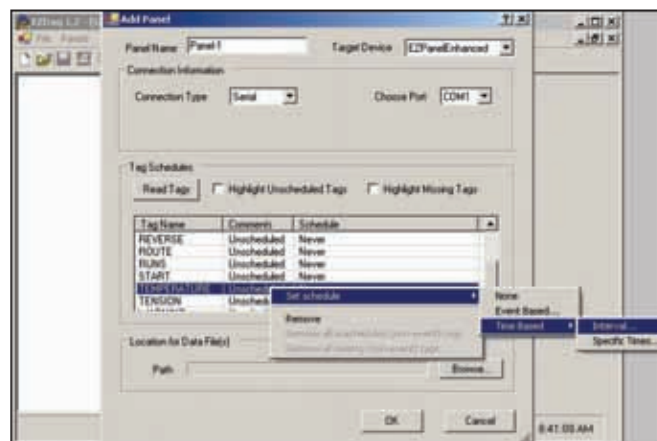


Toughpanels offer a sophisticated control, called the Multi-function Object. As the name implies, this Object allows you to perform multiple functions, including Mathematical and Logical operations on PLC data. For example, you can set/reset multiple bits & transfer constants or variables or expressions to tags. Remarkably, this Benefit allows a user to perform up to 20 operations with one Object. Toughpanel also allows you to perform these Multiple functions under the PLC control a very useful feature to offload mathematical & logical

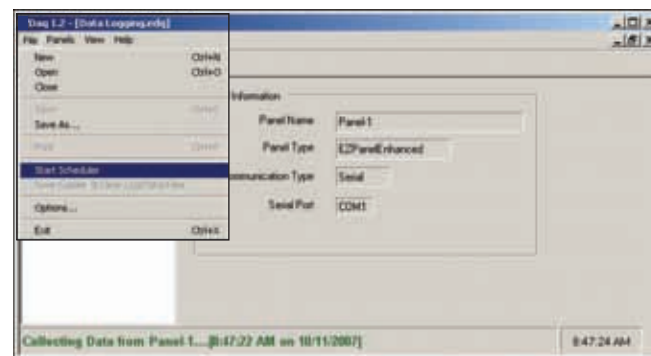
computations from the ladder logic to the panel.

How does it work?

- 1 Run the UTDaq application on a PC to create a Data Acquisition Schedule file.
- 2 Specify the tags and a schedule for each tag for data acquisition.
- 3 The Schedule can be set either on the basis of time or an event.



- 4 While creating the Data Acquisition Schedule file, Panel (from which data has to be collected) must be connected to the PC.
- 5 Once the Schedule file is created, the application can start collecting and storing acquired data.



- 6 For the CE Toughpanels, you have an option to collect the data on the panel itself but to create the Schedule file, you still need a PC.

