

Tough R-I/O™

Wide Variety of Plug-in I/O Modules: Discrete, Analog and Intelligent such as PWM, High Sped Counter/PLS



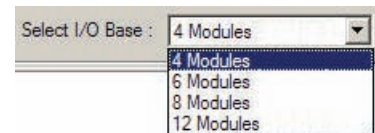
see page 4-72 for I/O specifications

4 Thermocouple Input.....	4THI	8 pt 230 AC In.....	8ACI2
High Speed Counter, 1 input/4 output.....	HSCM1	8 pt 230 AC Out.....	8ACO2
High Speed Counter, 2 input/4 output.....	HSCM2	4 pt 230 AC In, 4 pt 230 AC Out.....	4ACI4ACO2
Resistance Temperature Detector.....	RTD	4 pt 24V DC Out Source, 4 pt 230 AC Out.....	4DCOP4ACO2
Pulse Width Module.....	PWM	4 pt 230 AC In, 4 DC Out Source.....	4ACI4DCOP
Program Storage Module.....	PRGM	4 pt 24V DC In, 4 230 AC Out.....	4DCI4ACO2
8 pt 24V DC In.....	8DCI	8 Analog In Voltage.....	8ANIV
8 pt 24V DC Out Source.....	8DCOP	8 Analog In Current.....	8ANIC
8 pt 24V DC Out Sink.....	8DCON	4 Analog In, 4 Analog Out Voltage.....	4ANI4ANOV
8 pt 24V DC In Fast.....	8HSDCI	4 Analog In, 4 Analog Out Current.....	4ANI4ANOC
4 pt 24V DC In, 4 pt 24V DC Out Sink.....	4DCI4DCON	4 pt Relay Out.....	4RLO2
4 pt 24V DC In Standard, 4 pt 24V DC In Fast Interrupt	4DCI4DCIF	4 pt 230 AC In, 4 Relay Out.....	4ACI4RLO2
4 pt 24V DC In, 4 pt 24V DC Out Source.....	4DCI4DCOP	4 pt 24V DC In Source, 4 Relay Out.....	4DCIP4RLO2

EZiest to configure, Drag-n-Drop, Automatic Address Assignment

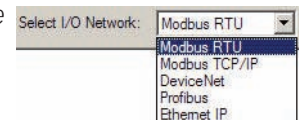
1 Select the I/O Base

Choose the 4 types of I/O base for your I/O modules



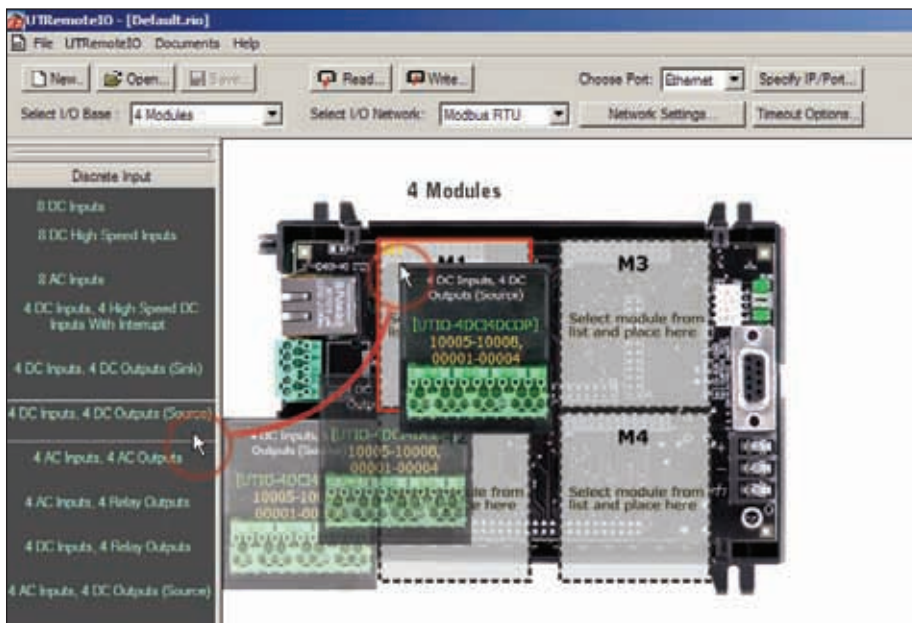
2 Select the I/O Network

Choose the Network type, Modbus RTU, Modbus TCP/IP, Ethernet IP, DeviceNet, or Profibus



3 Drag-n-Drop I/O Modules

Pick the I/O modules and Drop it on the I/O base, software automatically assigns all the nodes



4 Changing the Network

Changing the Network automatically changes the Address to the respective Network